



Memorial Center of Political Repression at Perm-36



"Perm-36" – typical GULAG camp

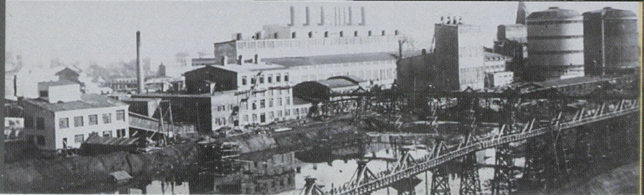
GULAG

During two and a half decades, since the end of the 1920s and till the day of Stalin's death, GULAG (official abbreviation for *"Main Administration of Camps"*) was not only a huge camp agency containing thousands of camps and millions of convicts, but the country's way of life. GULAG was an absolutely necessary element of the system. Without the GULAG slaves' cheap labor, the Stalin's socialist modernization program of the country's

economy would have been impossible. Without the total fear in face of horrors of repression and camps, the totalitarian regime and strict discipline and total subjection for those "at liberty" would have also been impossible. After the death of Stalin the number of camps in the USSR decreased, but the communism political system remained repressive till its collapse. In 1960-80s thousands of dissidents were placed in prisons, political camps, mental hospitals.

ВНЕШНЮЮ И ВНУТРЕННЮЮ ПОМОЩЬ
КПСС - ПОДДЕРЖИВАЕМ!

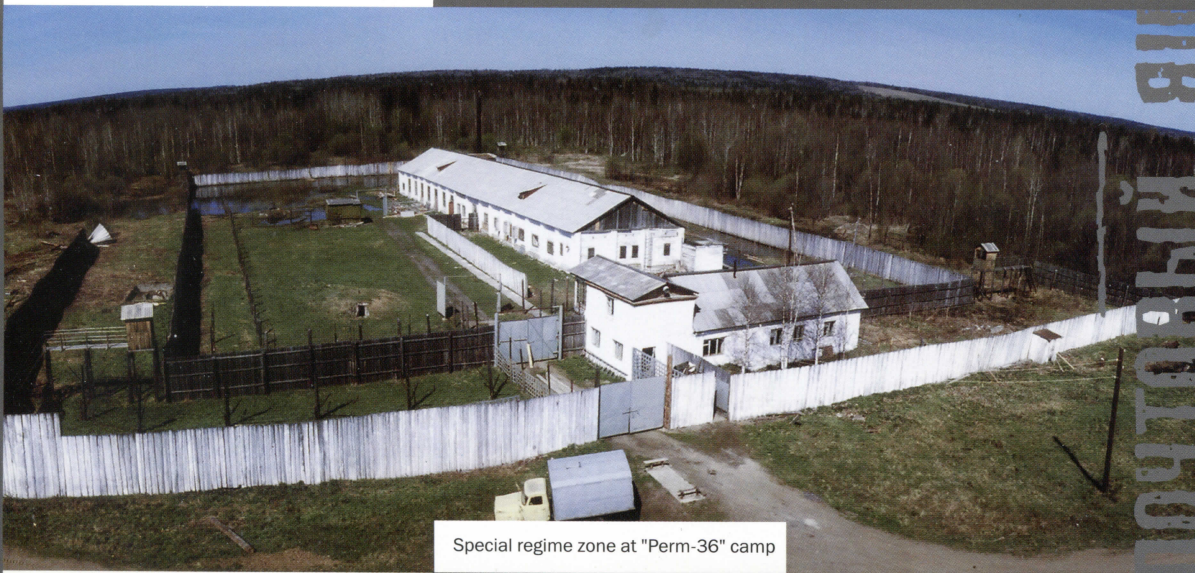
СМЕСИ XXV
- ВЫПОЛНИ
СТРОИТЕЛЯ ВЕКА



"Perm-36" Camp

The "Perm-36" camp operated more than 40 years. It was founded in 1943. In 1946 it was transferred to its current location. Till 1953 it served as a typical logging camp found throughout the country. After Stalin's death, the camp was converted to house officials of the repressive organs accused for organizing the "groundless repressions" under the Stalinist regime. In 1972 the camp was converted into the harshest political

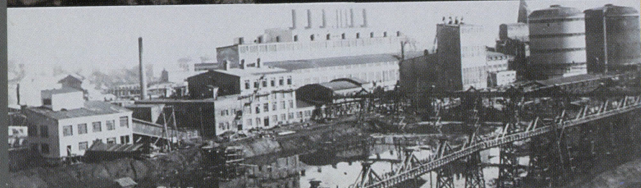
camp of the country and operated till the date of its closing in 1988. There was special regime facility, the only one of its kind in the country, to house the political prisoners in twenty-four-hour closed cells. They continued their intellectual struggle against the regime and its ideology after release from their first prison terms and were considered to be especially dangerous by the State. All of them, as a rule, were sentenced to 10 years.



Special regime zone at "Perm-36" camp



ПОЧТОВЫЙ ЯЩИК
№ УТ 389/36
д. Кучино, Чусовского Р-на,
Пермской области



ВНЕШНЮЮ И ВНУТРЕННЮЮ ПОЛИТИКУ
КПСС - ПОДДЕРЖИВАЕМ!

